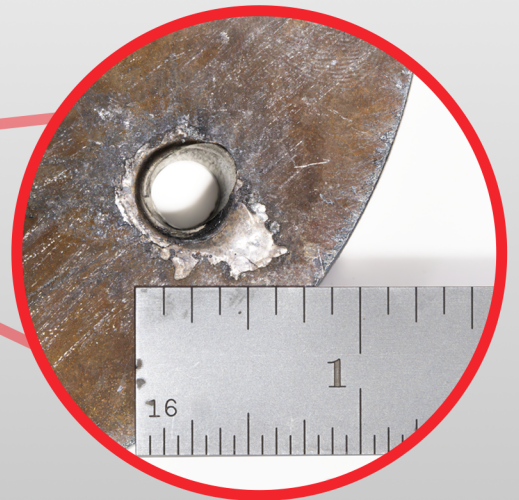
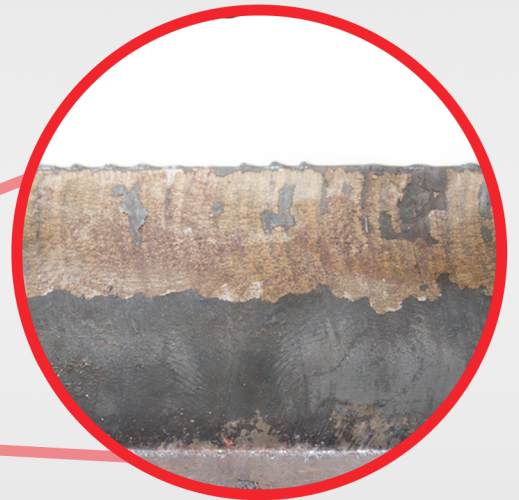
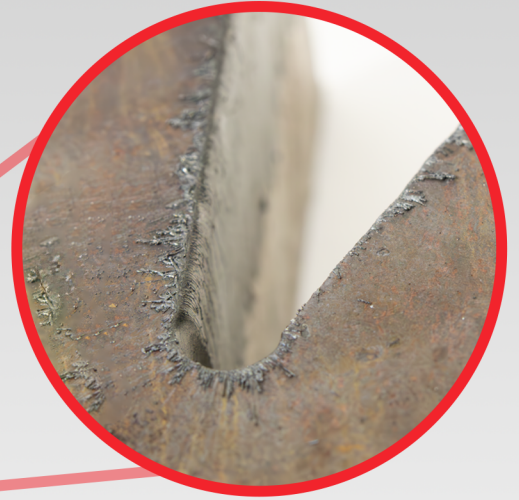
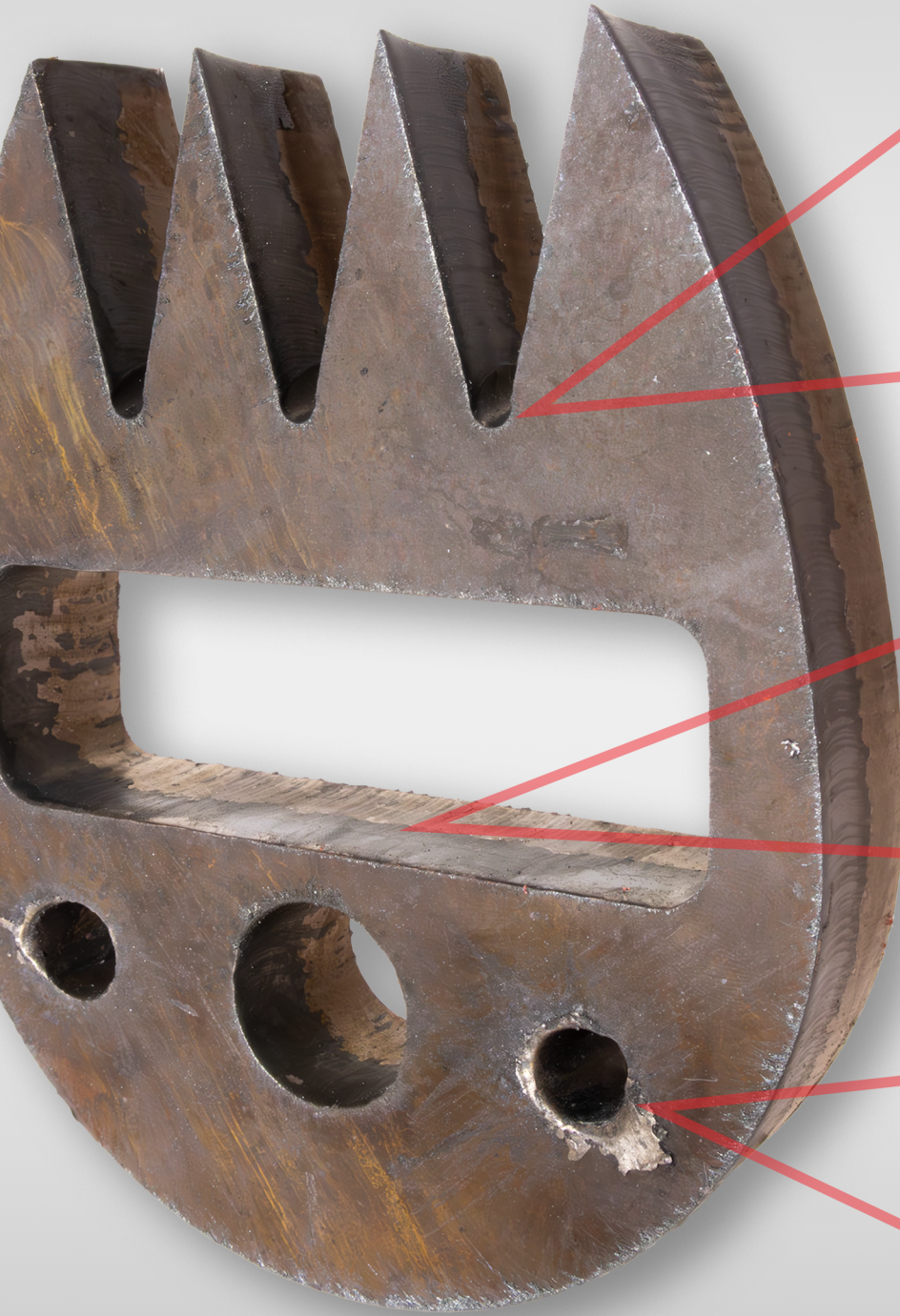


# HIGH-DEFINITION PLASMA

1" MILD STEEL



- ✓ LOWER COST OF ENTRY
- ✓ +/- 0.030" TOLERANCE ACCURACY (LARGER KERF)
- ✓ REQUIRES SECONDARY PROCESSING ON ALL PARTS
- ✓ INCREASED HOURLY COST FOR EMPLOYEE SKILL AND CONSUMABLES

\* PROGRAMMED HOLE SIZE: 1/4"  
ACTUAL HOLE SIZE: 1/2"



LEARN MORE

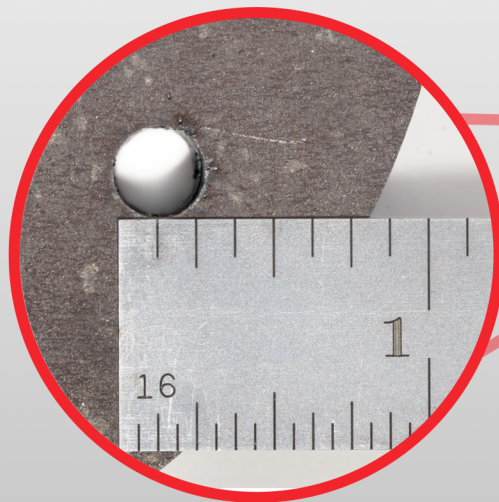
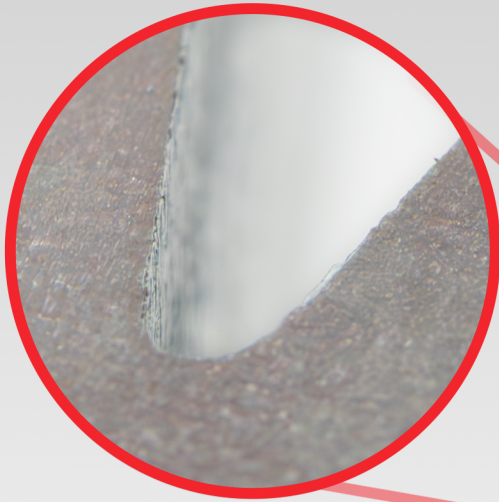
**KOIKE**  
ARONSON RANSOME



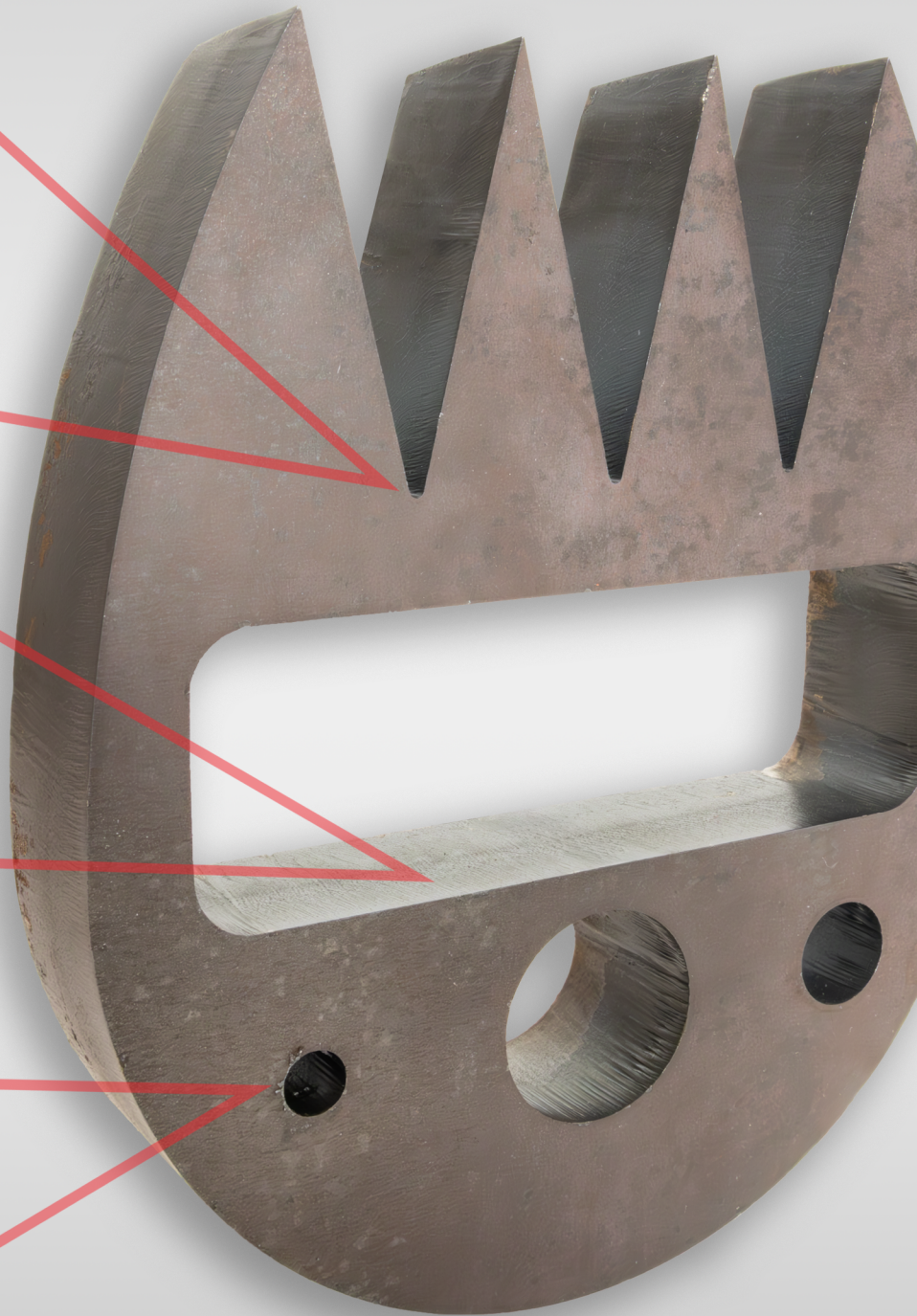


# FIBERTEX ZERO DBC LASER

1" MILD STEEL



\* PROGRAMMED HOLE SIZE: 1/4"  
ACTUAL HOLE SIZE: 1/4"



- ✓ HIGHER INITIAL INVESTMENT
- ✓ +/- .005" TOLERANCE ACCURACY (SMALLER KERF)
- ✓ CLEANER CUTS & LESS SECONDARY PROCESSING
- ✓ LOWER CONSUMABLE & ELECTRICITY COST PER PART
- ✓ LIGHTS-OUT OPERATION

